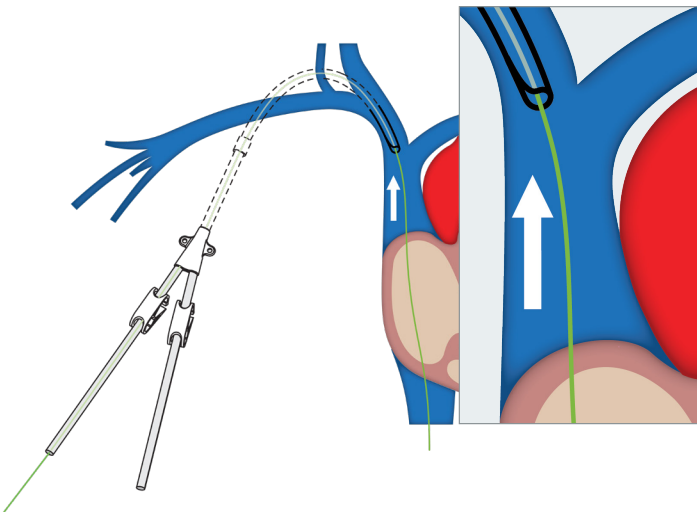


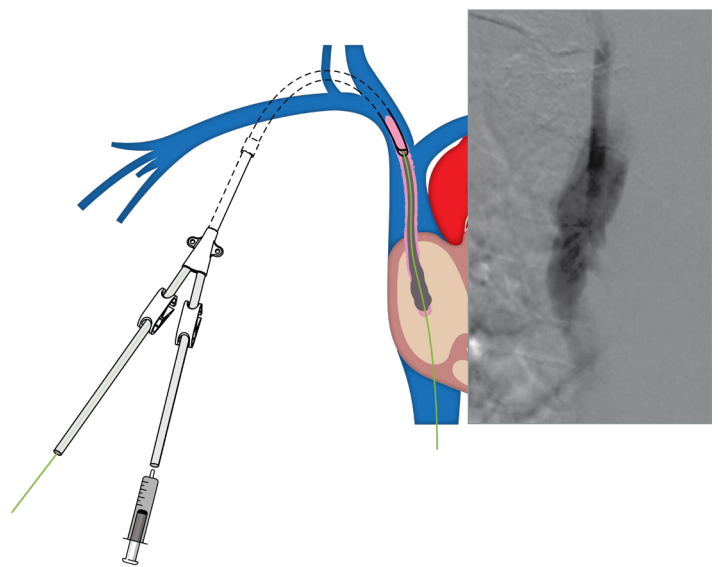
Technique guide

Chameleon™ PTA Balloon Catheter for Fibrin Sheath Disruption

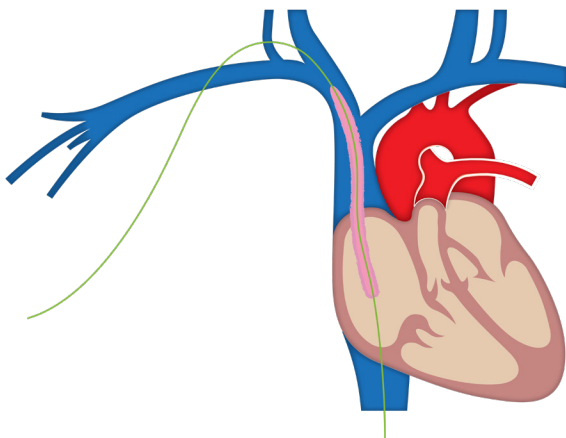
1 Retract catheter tip 5-10 cm to subclavian/SVC junction, or per local facility guidelines



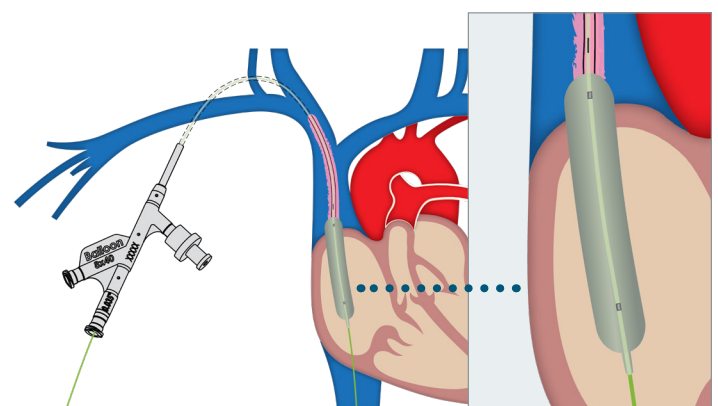
2 Inject contrast through lumen of existing catheter to assess for fibrin sheath



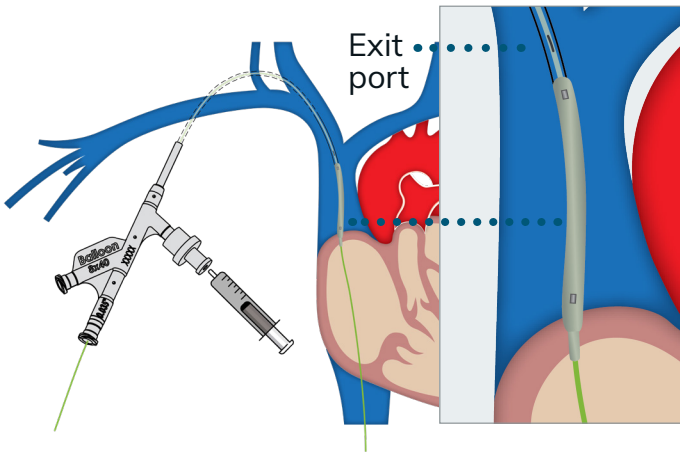
3 Remove catheter



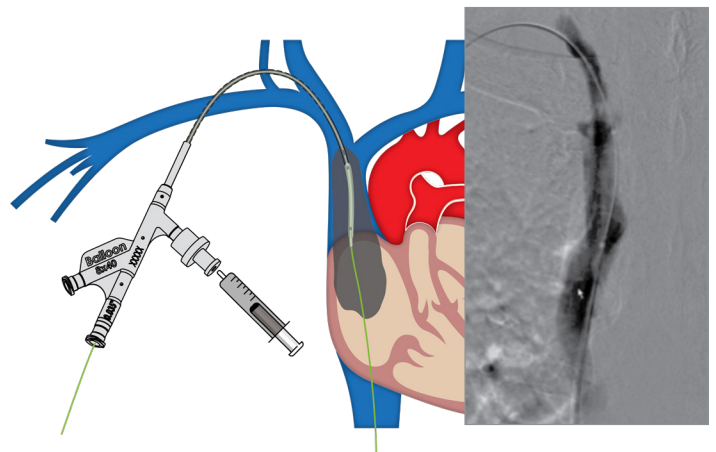
4 Advance the Chameleon™ PTA catheter and inflate along length of fibrin sheath



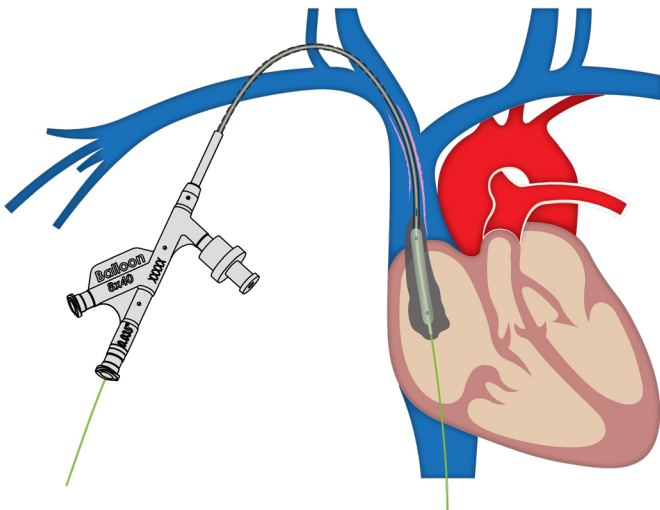
- 5 Retract the Chameleon™ PTA catheter and position exit port at subclavian/SVC junction



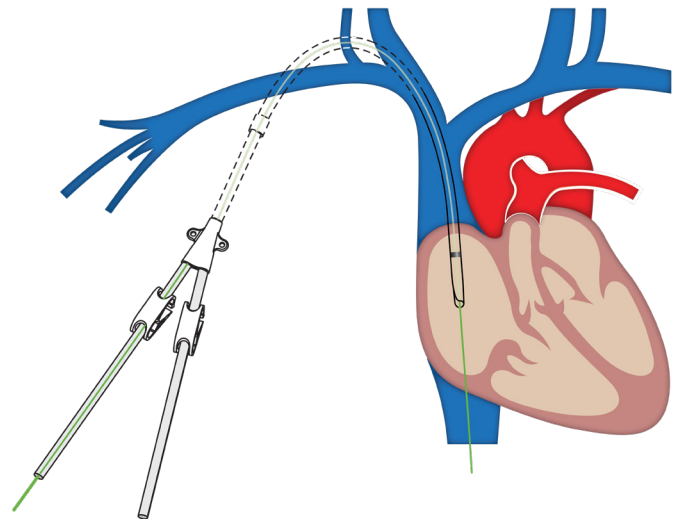
- 6 Inject contrast through the Chameleon™ PTA catheter to assess results



- 7 If fibrin sheath is still present, repeat angioplasty and imaging with the Chameleon™ PTA catheter



- 8 If no fibrin sheath, proceed with catheter exchange



Indications for use

The Chameleon™ PTA balloon catheter is indicated for use in percutaneous transluminal angioplasty of the peripheral vasculature, including the femoral, iliac, and renal arteries and for the treatment of obstructive lesions of native or synthetic arteriovenous dialysis fistulae.

The Chameleon™ PTA balloon catheter enables the infusion of diagnostic or therapeutic fluids. This catheter is not for use in coronary arteries or cerebral vasculature.

Contraindications

Do not use the Chameleon™ PTA balloon catheter for coronary arteries nor for the delivery and/or expansion of stents in patients who cannot tolerate anticoagulation therapy.