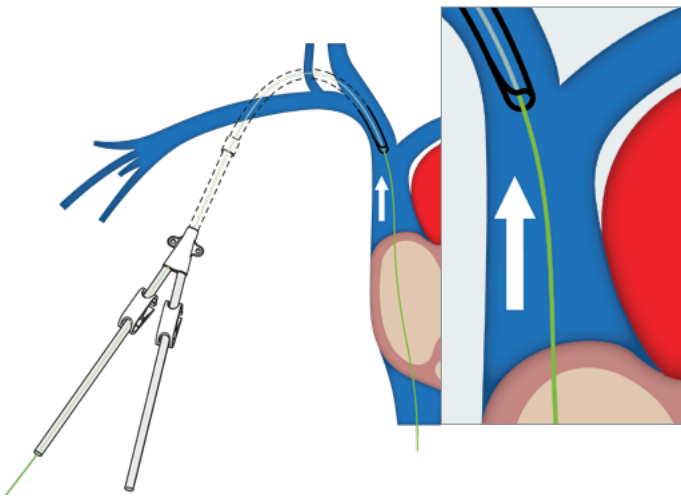


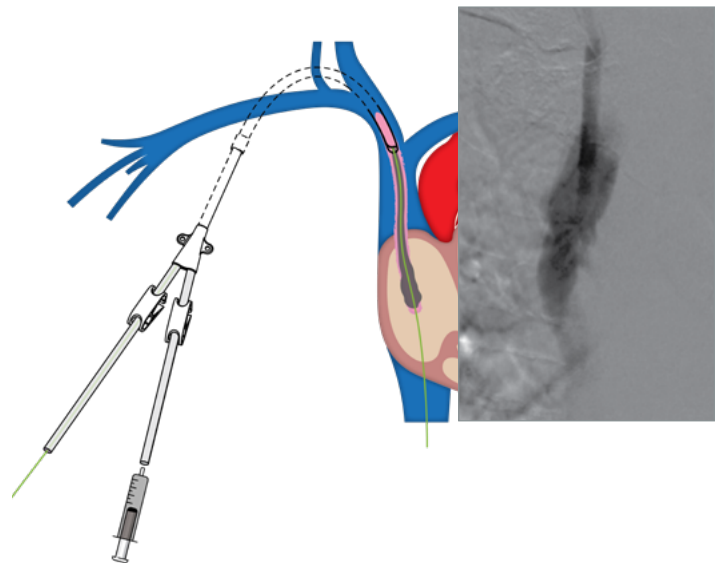
Technique guide

Chameleon™ PTA Balloon Catheter for Fibrin Sheath Disruption

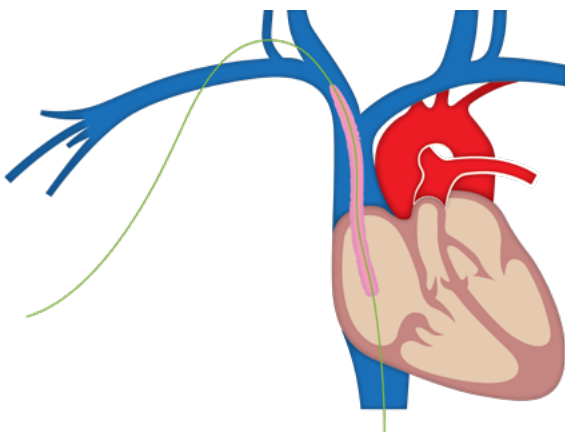
- 1 Retract catheter tip 5-10 cm to subclavian/ SVC junction, or per local facility guidelines



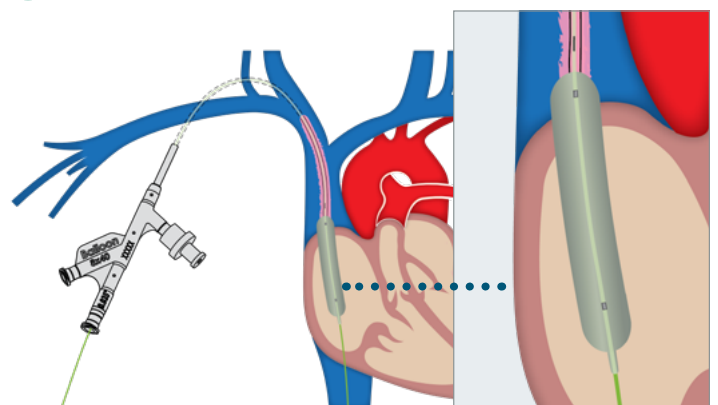
- 2 Inject contrast through lumen of existing catheter to assess for fibrin sheath



- 3 Remove catheter

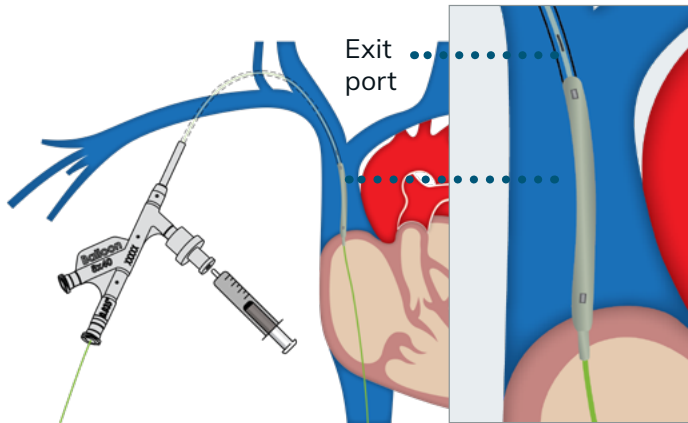


- 4 Advance the Chameleon™ PTA catheter and inflate along length of fibrin sheath



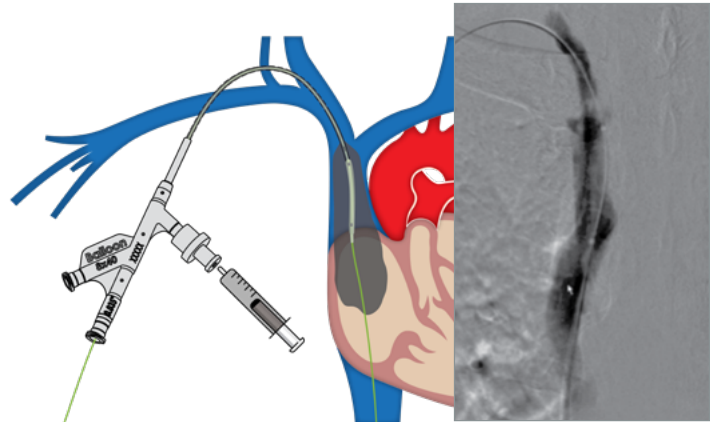
5

Retract the Chameleon™ PTA catheter and position exit port at subclavian/SVC junction



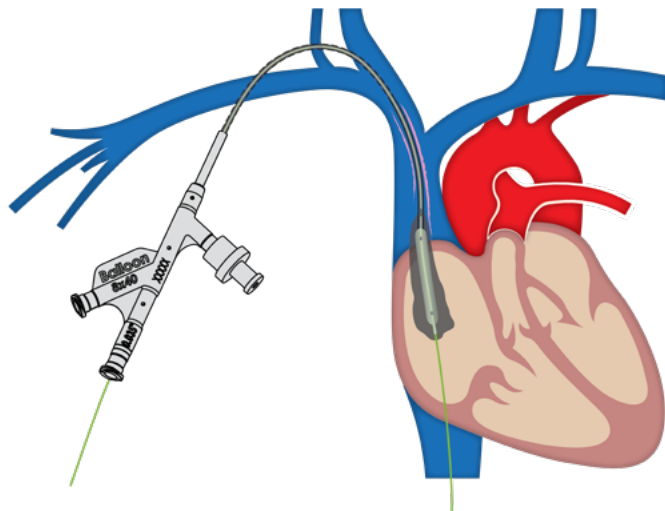
6

Inject contrast through the Chameleon™ PTA catheter to assess results



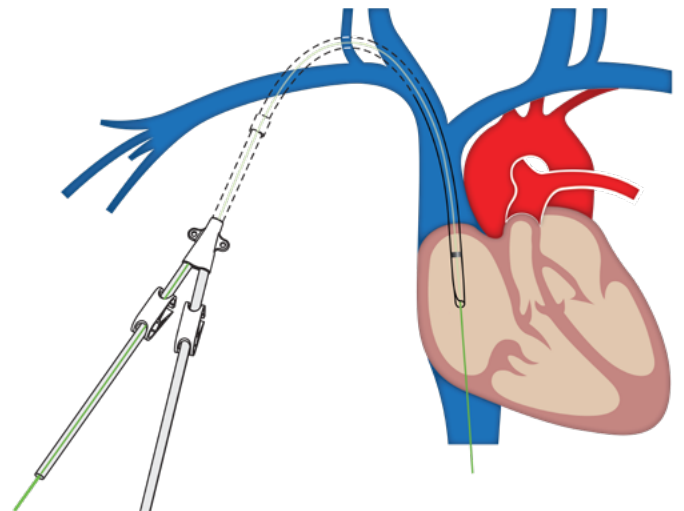
7

If fibrin sheath is still present, repeat angioplasty and imaging with the Chameleon™ PTA catheter



8

If no fibrin sheath, proceed with catheter exchange



Indications for use

The Chameleon™ PTA balloon catheter is indicated for use in percutaneous transluminal angioplasty of the peripheral vasculature, including the femoral, iliac, and renal arteries and for the treatment of obstructive lesions of native or synthetic arteriovenous dialysis fistulae.




The Chameleon™ PTA balloon catheter enables the infusion of diagnostic or therapeutic fluids. This catheter is not for use in coronary arteries or cerebral vasculature.

Contraindications

Do not use the Chameleon™ Device:

- For coronary arteries, cerebral vasculature, nor for the delivery and/or expansion of stents.
- In patients who cannot tolerate anticoagulation therapy.

Mozarc Medical
EMEA Regional Headquarters
Via Varesina, 162
20156 Milano MI, Italy

 emeacontactus@mozarcmedical.com
 mozarcmedical.com
 LinkedIn

Mozarc Medical is a DaVita | Medtronic company.
Copyright © 2023 Mozarc Medical Holding LLC. Mozarc, Mozarc Medical, the Mozarc Medical logos, and Empowering Patients. Enriching Lives. are trademarks of Mozarc Medical. 12/2023.
EMEA-RC-2200018-EN
Products may not be available in certain countries.

Mozarc
Empowering patients.
Enriching lives. **medical**